



FAST FACTS



On behalf of the Board of Trustees and all of us serving in the Ventura County Community College District...welcome! How can our community colleges help you meet your educational and career goals? We are here to help you answer that question and work with you to create a pathway to success.

Moorpark College, Oxnard College, Ventura College and Ventura College East Campus each offers many high-quality courses and programs leading to



certificates and degrees to prepare you for careers and/or that transfer into baccalaureate programs. Experienced faculty and staff make your success their top priority.

Your success is our success, and we can't wait to see where your path will lead you.

Best wishes,

Greg Gillespie

Greg Gillespie, Chancellor

ggillespie@vcccd.edu

MOORPARK COLLEGE

OXNARD COLLEGE

VENTURA COLLEGE

VC EAST CAMPUS

Ventura County Community College District (VCCCD) is a public community college district serving residents throughout Ventura County. VCCCD's three colleges — Moorpark College, Oxnard College, and Ventura College — offer programs for transfer to four-year colleges and universities; career training; basic skills instruction; as well as community service, economic development partnerships, and continuing education for cultural growth, life enrichment, and skills improvement. In fall 2020, VCCCD served 29,948 students. The colleges are accredited by the Accrediting Commission for Community and Junior Colleges of the Western Association of Schools and Colleges, an institutional accrediting body recognized by the Council for Higher Education Accreditation and the U.S. Department of Education.

The **District Administrative Center**, centrally located in Camarillo, oversees administrative functions and provides leadership and services to the three colleges in support of VCCCD's mission.

805.652.5500 | vcccd.edu

Greg Gillespie, Ph.D., Chancellor

Moorpark College is the second oldest and largest of the colleges, located on 154 acres of sloping hillside land in the eastern region of Ventura County. The college has been serving the community since 1967.

805.378.1400 | moorparkcollege.edu

Julius Sokenu, Ed.D., President

Oxnard College was founded in 1975 and is set on 118 acres. Located just two miles from Pacific Ocean beaches, the college is easily accessible by the 101 freeway or Pacific Coast Highway.

805-678-5800 | oxnardcollege.edu

Luis P. Sanchez, JD, LLM, President

Ventura College is one of the oldest community colleges in California, with its roots dating back to 1925. In 1955, the college moved to its present 112-acre hillside campus in eastern Ventura. In the late 1970s, Ventura College opened a Santa Paula site, Ventura College East Campus (VCEC), to serve the needs of the growing community in the Santa Clara River Valley.

805-289-6000 | venturacollege.edu

Kimberly Hoffmans, Ed.D., President

Ventura College East Campus

805.525.7136 | venturacollege.edu/eastcampus

Jesus Vega, Ed.D., Assistant Dean

VCCCD LEADERSHIP

VCCCD is governed by a five-member, locally elected Board of Trustees and a student Board member. The five Trustees are elected in even-numbered years by voters in Ventura County and each serve four-year terms. The Board of Trustees is responsible for adopting policies that govern the business of the District and its colleges. The Board of Trustees—through a lens of diversity, equity, and inclusion—is guided by three strategic goals:

1. Increase access and student success.
2. Actively support workforce and economic development in Ventura County through partnerships and relevant programs and pathways leading from education to careers.
3. Maintain sustainable management of all organizational resources aligned with established priorities and implemented with transparency and accountability.



Board of Trustees

Left to right: Chair Joshua Chancer, Vice Chair Dianne B. McKay, Trustee Stan Mantoath, Trustee Bernardo M. Perez, Trustee Gabriela Torres

MISSION STATEMENT

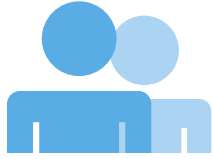
Ventura County Community College District provides students, in its diverse community, with access to comprehensive quality educational opportunities that support student learning and student success.



VENTURA COUNTY COMMUNITY COLLEGE DISTRICT

FACTS AT A GLANCE

STUDENT ENROLLMENT (Districtwide Fall 2020)



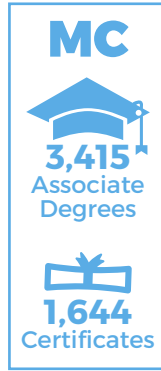
14,601
Moorpark
College



7,119
Oxnard
College

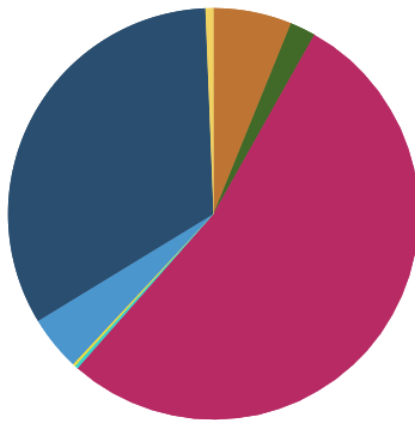


11,893
Ventura
College



STUDENT ETHNICITY (Districtwide Fall 2020)

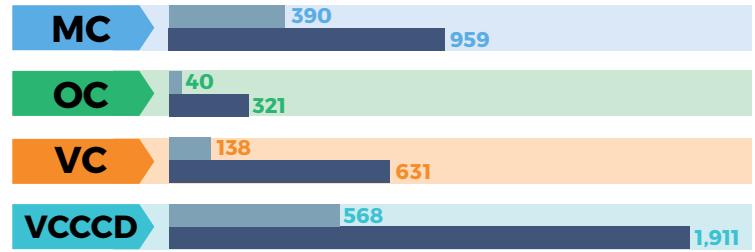
- African American/Black
- American Indian/Alaskan
- Asian
- Hispanic
- Pacific Islander
- Two or More Races
- White
- Unreported



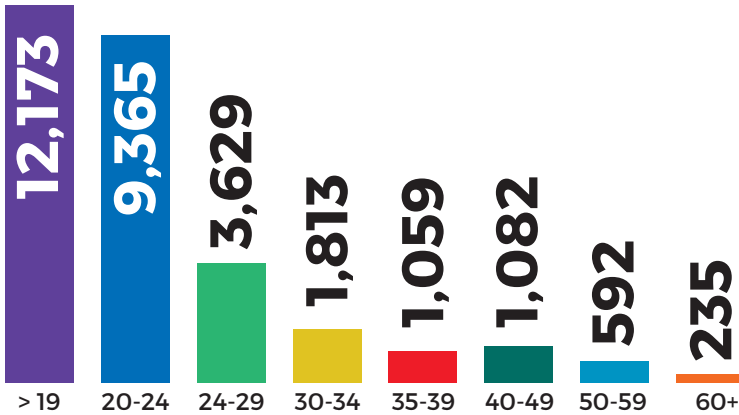
TRANSFER DATA 2019/20

UC TRANSFER

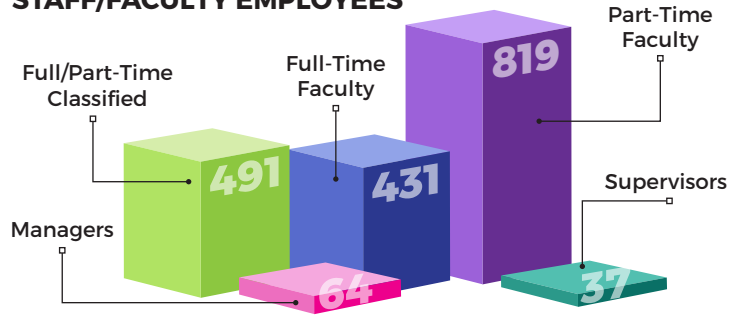
CSU TRANSFER



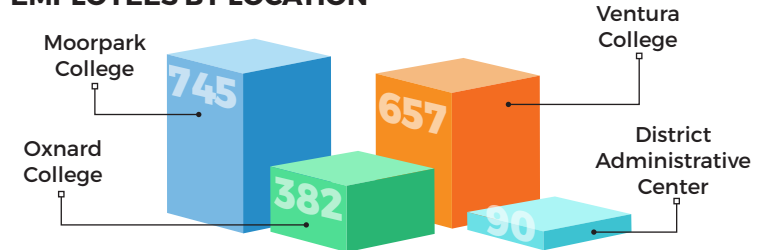
STUDENT AGE (Districtwide Fall 2020)



STAFF/FACULTY EMPLOYEES



EMPLOYEES BY LOCATION



CALIFORNIA COMMUNITY COLLEGES

The California Community Colleges is a system of two-year public institutions comprised of 116 colleges statewide organized into 73 districts. The largest system of higher education in the nation, the California Community Colleges serve more than 2.1 million students. The community colleges play an important role in ensuring that all California residents have access to quality higher education.

Community colleges offer low-cost, high quality collegiate courses to all students who can benefit from instruction offered. Enrollment fees are \$46 per unit. Financial assistance is available for students who need help in meeting their educational costs. Resident enrollment fees at a community college are approximately \$1,294 for one year, compared to \$5,752 at California State University (CSU)(2021/22) and an estimated average cost of \$12,570 at University of California (UC) (2020/21).

The Ventura County Community College District (District) prohibits all forms of harassment and discrimination based on any of the following statuses: race, religious creed, color, national origin, ancestry, physical disability, mental disability, medical condition, genetic information, marital status, sex, gender, gender identity, gender expression, age, or sexual orientation of any person, or on the basis of these perceived characteristics or based on the association with a person or group with one or more of these actual or perceived characteristics. The District enforces all state and federal laws and District policy prohibiting harassment and discrimination.