

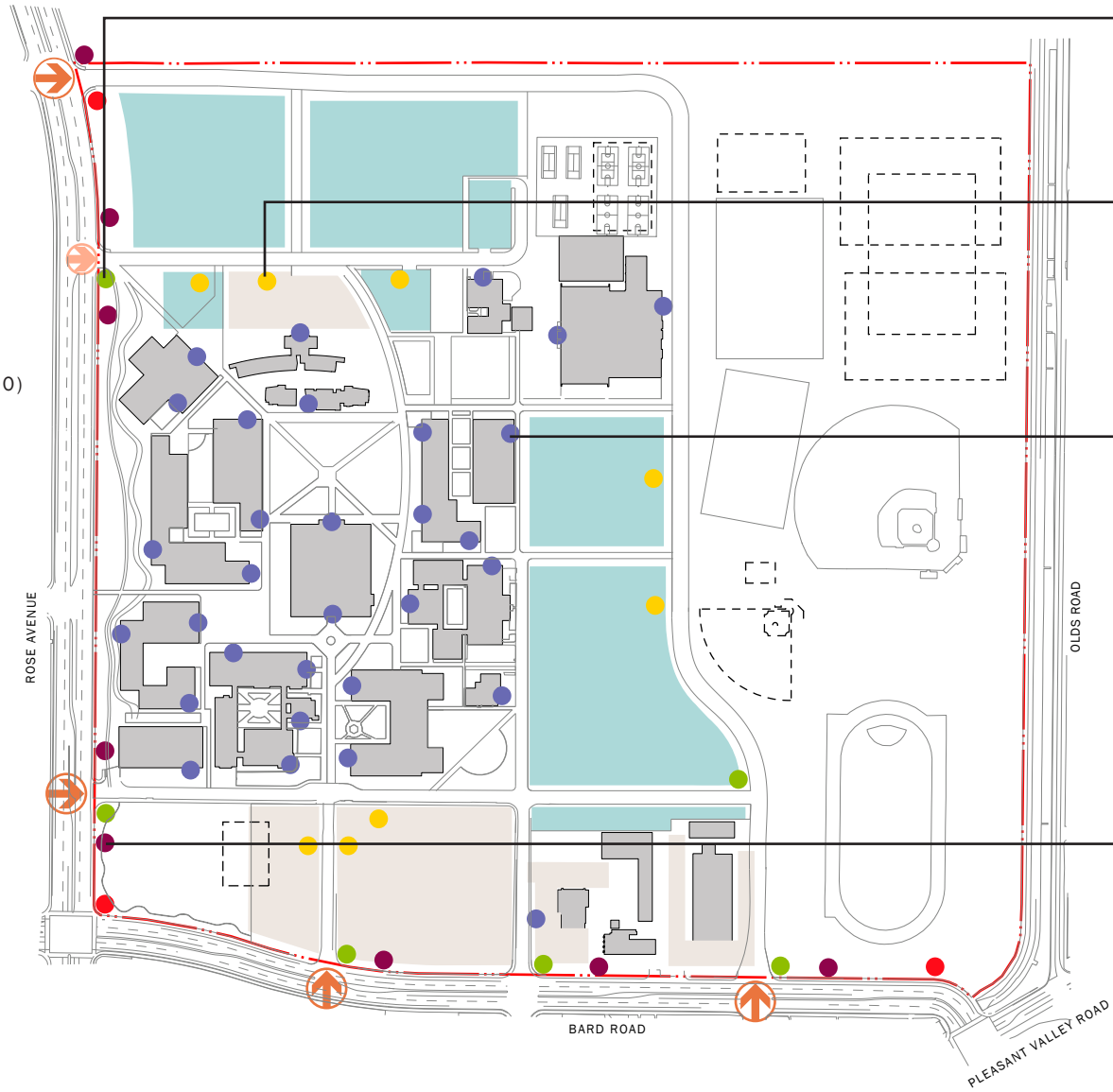
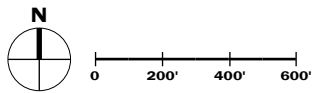


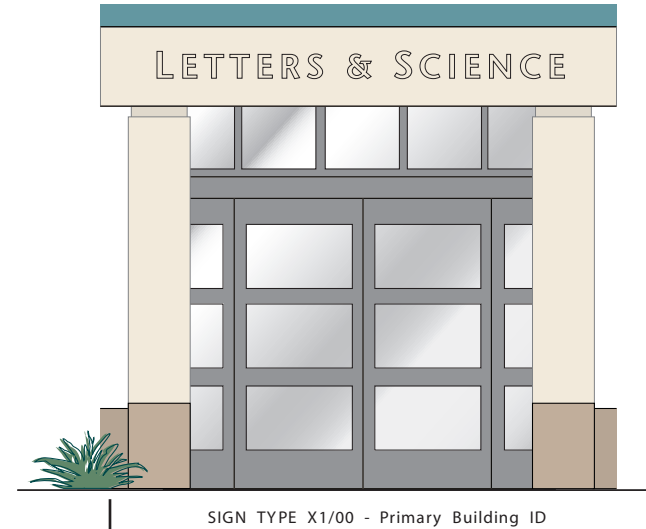


CAMPUS WAYFINDING AND SIGN PLAN

CAMPUS WAYFINDING AND SIGN PLAN

- FUTURE CAMPUS ID SIGNS (ST R2/00)
- DIRECTIONAL ROADWAY (ST R3/00)
- STREET SIGNS (ST R3/00)
- PARKING FEES / REGULATIONS (ST R4/00)
- PRIMARY BUILDING ID (ST X1/00)
-  PRIMARY CAMPUS ENTRY
-  SECONDARY CAMPUS ENTRY
- FUTURE PARKING EXPANSION
- EXISTING PARKING

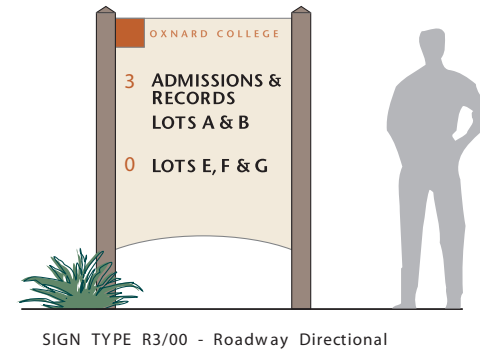




THE CAMPUS SIGN PROGRAM

(Note: At the time of Final Oxnard College Facilities Master Plan 2004 preparation, modifications to the campus sign family concept shown here were underway. The concept illustrated here does not reflect the changes underway at that time. The separate Sign Guidelines Appendix binder prepared in conjunction with the Facilities Master Plan 2004 was to contain the modified sign concept.)

The new campus wayfinding program will use landmarks, signage, pathways and environmental cues to help first time visitors navigate the campus and find destinations easily and conveniently. Sign components will be well planned, seamlessly connected and esthetically pleasing, creating a positive first impression and a sense of security and comfort for students, faculty and guests.



7

THE CAMPUS SIGN SYSTEM

4

Hierarchy of sign types by category:

"R" Series - Roadway/Vehicular

"P" Series - Pedestrian

"X" Series - Architectural Exterior

"A" Series - Architectural Interior

A separate signage master plan guidelines booklet prepared as part of the Facilities Master Plan provides key information for signs in each of the four categories as well as detailed lists of recommended signs.

These initial elements can be expanded into every sign type utilized on campus.

The program can be introduced incrementally as new construction and revitalization takes place.



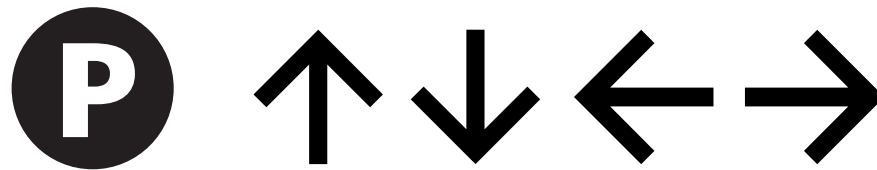
CAMPUS TYPEFACE

Stone Sans Semibold has been selected for legibility, style and conformance with ADA typographic guidelines.

abcdefghijklmnopno
 pqrstuvwxyz
 ABCDEFGHIJKLMN
 OPQRSTUVWXYZ
 0123456789!?'&

CAMPUS SYMBOLS

Modern graphic symbols and arrows will be used to help simplify messages and provide clear and succinct information.



International Symbol
of Accessibility



No Smoking



Restrooms
Men, Women, &
Shared Gender



Telephone

